



REIMAGINING RECREATION SERVICES CASTLEGAR & DISTRICT AREA

COMMUNITY REVIEW SYNOPSIS

PHASE 3: A PATH FORWARD

JANUARY 2025







TABLE OF CONTENTS

CONTENTS

1	Introduction	1
2	Process	3
3	Findings – Phase 3	5
	3.1 About the Respondents	6
	3.2 Overall Survey Findings.	8
	3.3 A Secondary Indoor Ice Sheet	11
	Appendices	13
	Appendix A – Community Meeting Presentation Material	14
	Appendix B – Feedback Form	25

SECTION 1.0

INTRODUCTION



The Castlegar & District Recreation Commission provides recreation services to residents in Electoral Areas I and J and the City of Castlegar. These services include regional facilities and amenities related to recreation, leisure, and cultural purposes. They encompass a variety of facilities and amenities including regional parks, athletic fields, and the Castlegar & District Community Complex.

Stemming from the 2016 Recreation and Culture Master Plan, various facility assessments, and several community engagement processes, the Recreation Commission decided, in 2023, to undertake further community engagement. This engagement program provided updated information to the Recreation Commission regarding the community's opinions and suggestions related to recreation services offered as well as potential enhancements to those services in Castlegar and Electoral Areas I & J.

Two surveys were fielded which gathered the perspectives of residents and community organizations regarding potential enhancements to recreation in the Castlegar District but also to potential enhancements to the Castlegar & District Community Complex. These surveys were fielded as part of Phase 2: Information Seeking in April and May 2024.

To fulfill a commitment to the public, the findings from these two surveys were shared with the community. In late October 2024, two open houses were held during which some of the survey findings were shared using static displays with team members in attendance to answer questions.

- **Open House 1:** October 27th 6:00 to 7:00 p.m. at Tarry's Hall.
- **Open House 2:** October 28th 6:00 p.m. to 7:00 p.m. at the Castlegar & District Community Complex.

A feedback form was available for attendees to complete. The form asked respondents whether, in their opinions, the findings reflect their community. It also explored the specific findings from the broad community survey about a potential secondary indoor ice sheet. Refer to the Appendix to see the presentation material and the feedback form. The detail findings from the Phase 2 surveys can be found under a separate cover entitled "What We Heard Report – Technical Appendix" dated October 2024.



SECTION 2.0

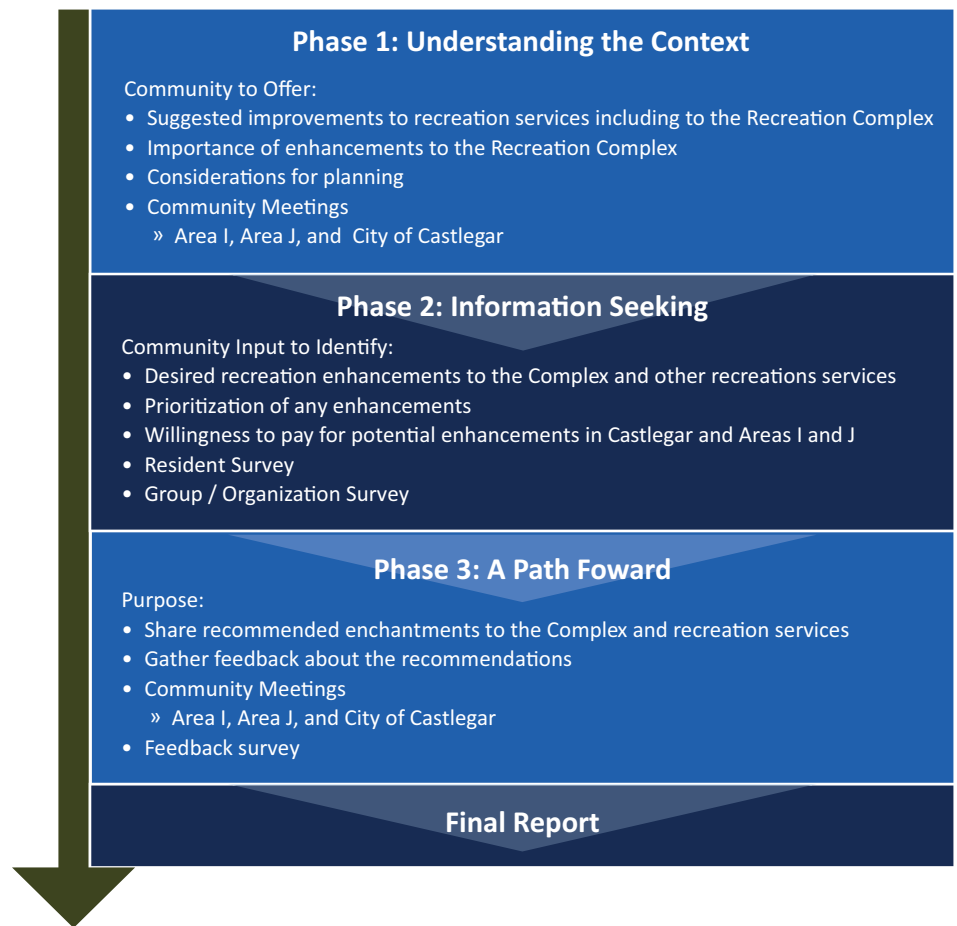
PROCESS



As referenced above, the engagement project encompassed three distinct phases each with its own engagement tactics. Phase 1: Understanding the Context sought to gain an understanding of district residents' opinions regarding current recreation service provision and suggestions for desired enhancements.

Phase 2: Information Seeking built upon the information gathered in the previous phase. The tactics employed in Phase 2 included a resident survey and a survey of organized groups and organizations that provide recreation services or have a vested interest in their provision.

The final phase – Phase 3: A Path Forward – included the sharing of findings with the community and their response to those findings.



SECTION 3.0

FINDINGS – PHASE 3



This report presents the findings gathered from the feedback mechanism. While some hard copies were completed at the two open houses, the majority of the feedback was captured through the online version. Note: the feedback captured on the feedback forms at the open houses was combined with the online feedback.

The accompanying table identifies the locations and dates for the two open houses; it also identifies the estimated attendance at each.

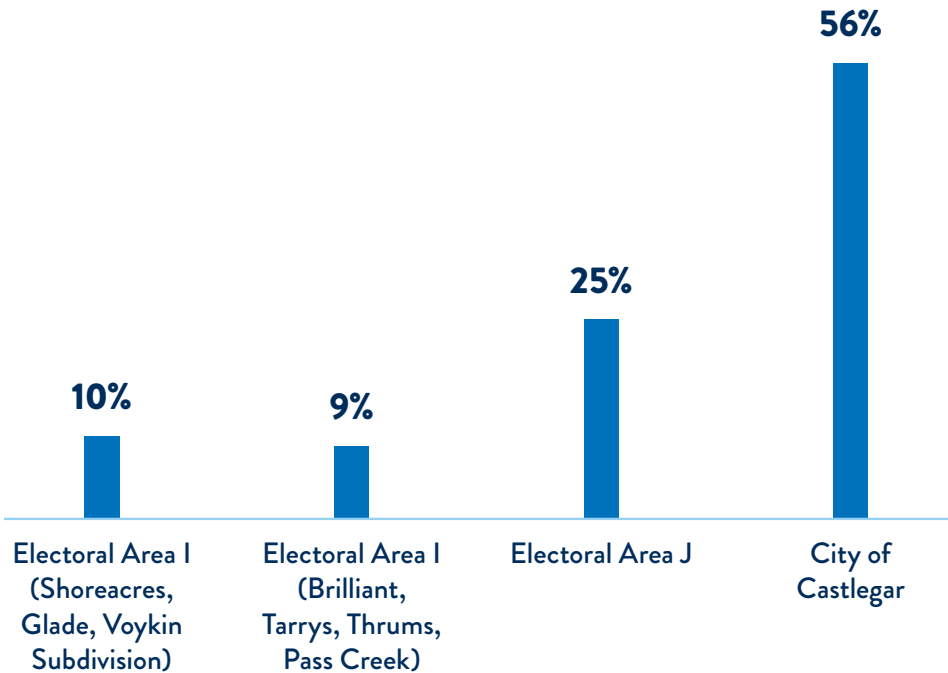
Date	Location	Attendance
October 27, 2024	Tarry’s Hall	35
October 28, 2024	Castlegar & District Community Complex	100
2 Sessions	Total Attendance	135

From October 29th through to November 18th 2024, 496 responses¹ were collected from residents in Castlegar, Electoral Area I, and Electoral Area J. The findings are presented² below according to the residency of respondents.

3.1 ABOUT THE RESPONDENTS

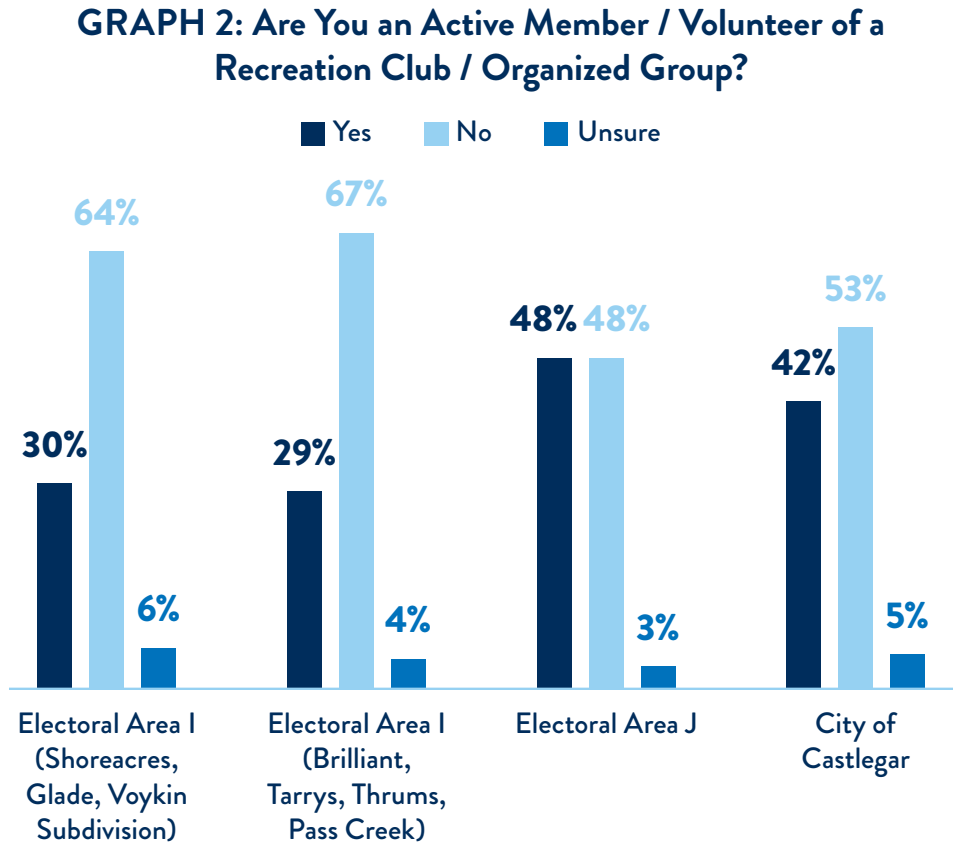
To begin, respondents were asked to identify where they live. As illustrated in the accompanying graph, approximately half (56%) of respondents live in Castlegar.

GRAPH 1: Residency of Respondents



1 Not all respondents completed all questions. This figure includes the entry of completed workbooks.
2 The numbers included in the write-up refers to the frequency of mentions.

Next, respondents indicated if they are active members or volunteers of a recreation club or organized group. While a minority of respondents in each of the areas identified themselves as active members or volunteers, the proportion of those who said they are is higher in Electoral Area J (48%) and Castlegar (42%) than the two sub areas of Area I. See the graph.



Those respondents who are members, identified the name of their club(s) or group(s). The list of groups with at least three mentions is presented below according to the four different resident groupings.

ELECTORAL AREA I (SHOREACRES, GLADE, VOYKIN SUBDIVISION)

- Castlegar Minor Hockey Association (4 respondents)
- Shoreacres Hall Soccity (3)
- Castlegar Nordic Ski Club (3)
- Crescent Valley Fire Department / Tarrys Fire Department (3)

ELECTORAL AREA I (BRILLIANT, TARRYS, THRUMS, PASS CREEK)

- Hockey and ice users (includes Castlegar Minor Hockey Assoc., Castlegar Gentlemen’s Hockey League, and other ice users) (6)

ELECTORAL AREA J

- Castlegar Minor Hockey Association (23 respondents)
- Aquanauts / swimming (4)
- Curling (3)
- Parks and Trails Society (3)
- Castlegar Minor Soccer / West Kootenay Minor Soccer (3)

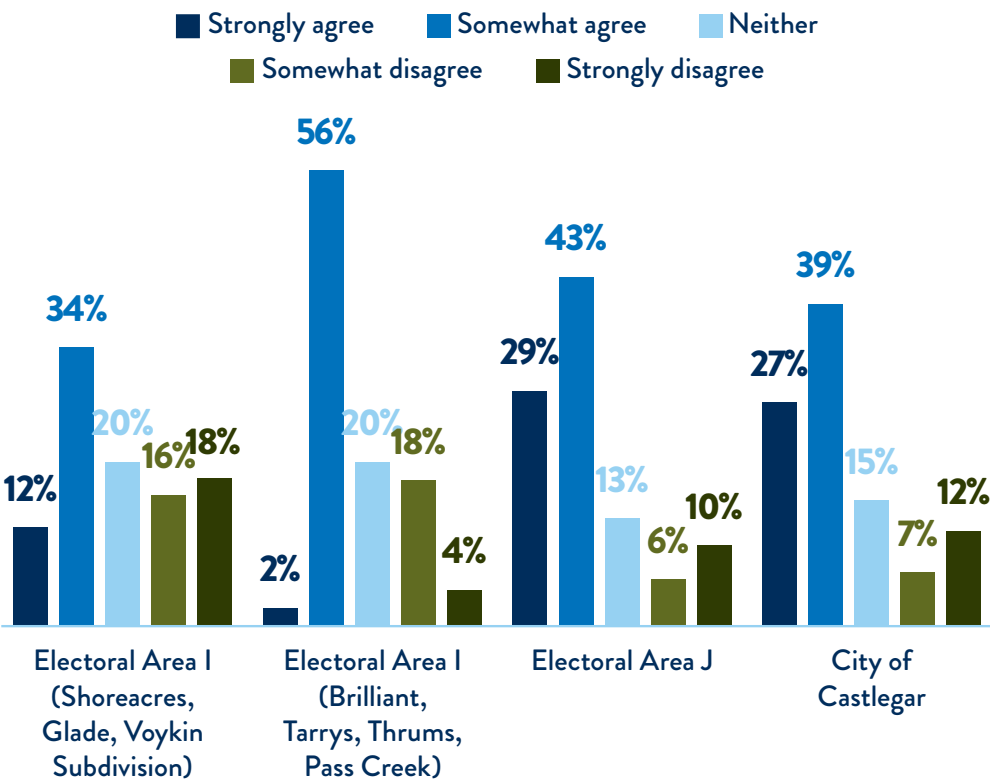
CITY OF CASTLEGAR

- Castlegar Minor Hockey Association (46 respondents)
 - » Other hockey (10)
- Soccer – youth and adult (11)
- Aquanauts and swimming (7)
- Curling club (6)
- Gymnastics (6)
- Seniors club (5)

3.2 OVERALL SURVEY FINDINGS

After reviewing the findings, respondents were asked the extent to which they agree that the findings reflect the communities in which they live. As illustrated in the accompanying graph, almost three-quarters (72%) of Area J respondents agreed that the survey findings reflect their community. Two-thirds (66%) of Castlegar respondents also agreed compared to fifty-eight percent of respondents from Electoral Area I (Brilliant, Tarrys, Thrums, Pass Creek), and less than half of respondents (46%) from Electoral Area I (Shoreacres, Glade, Voykin Subdivision).

GRAPH 3: Extent of Agreement That the Survey Findings Reflect Your Community (where you live)?



Respondents were asked to explain their answers. A synopsis of the responses given are presented below according to the four different areas and response type. For example, a synopsis of the rationale for their answers is presented for respondents who agreed (strongly or somewhat, disagreed (strongly or somewhat), and those who neither agreed nor disagreed.

ELECTORAL AREA I (SHOREACRES, GLADE, VOYKIN SUBDIVISION)

- **Agreed (Strongly or Somewhat)**

- » Many in this rural area do not use the Community Complex in Castlegar; recreation in rural areas is more local. (4 responses)
- » Additional investment is needed into improving the Community Complex (4)
- » Any increases in taxation is a burden that some cannot afford. (4)
- » The taxation example makes the increase seem affordable when the property values are much higher. (2)
- » Users should have to pay for facility improvements. (2)
- » All the services are in Castlegar not where people in this area are. (2)

- **Disagreed (Strongly or Somewhat)**

- » Other communities make do with a single sheet of ice. (3 responses)
- » No need for gym improvements as those services are offered elsewhere in the community. (3)
- » Many do not use the services nor the Complex. (3)

- **Neither Agreed nor Disagreed**

- » Participation in the survey was questioned, with the suggestion that the findings do not reflect the entire community. (2 responses).

ELECTORAL AREA I (BRILLIANT, TARRYS, THRUMS, PASS CREEK)

- **Agreed (Strongly or Somewhat)**

- » There is little use of the Community Complex in this area so less support for enhancements. (6 responses)
- » Taxes are high enough currently. (2)
- » No additional funds should be directed towards the Community Complex. (2)
- » Recreation facilities are needed for new families and to attract people. (2)
- » The findings do not reflect the entire community as not everyone was aware of the survey or took part in it. (2)

- **Disagreed (Strongly or Somewhat)**

- » The survey responses do not represent the area. Many did not participate / under representation to younger people. (4 responses)

- **Neither Agreed nor Disagreed**

- » It is hard enough to make ends meet without another increase in costs; taxes are high enough already. (2 responses)

ELECTORAL AREA J

- **Agreed (Strongly or Somewhat)**

- » A second sheet of ice is needed in the area. (14 responses)
- » The findings do reflect the community. (14)
- » Improvements to the facility are needed. (10)
- » Not everyone in the community participated in the survey; only a small proportion of residents participated. (4)
- » A pool upgrade is needed. (3)
- » An indoor track is needed. (3)
- » The improvements are good for a growing community. (3)

- **Disagreed (Strongly or Somewhat)**

- » Taxes are high enough; would not support any increases (6 responses)
- » Survey findings do not reflect the community – participation in it was low. (5)
- » The Complex is not used by many in Area J. (2)
- » A second sheet of ice is needed. (2)
- » Improvements to the Complex are needed to serve the population and attract people. Improvements should be those that serve the largest proportion of the community. (2)

- **Neither Agreed nor Disagreed**

- » Not everyone in the community participated in the survey. (4 responses)

CITY OF CASTLEGAR

- **Agreed (Strongly or Somewhat)**

- » A secondary ice sheet is needed. (49 responses)
- » Concerns were expressed related to the survey (17) including small number of responses (8) and the over representation in participation from the hockey cohort. (6)
- » An indoor walking track is needed. It is especially important for seniors. (16)
- » There are multiple facility improvement needs. (16)
- » Improvements to the pool need to proceed. (11)
- » Improvements to the fitness centre are needed. (6)
- » Taxes are high enough; further increases are not affordable. (6)
- » It is important to consider the economic impact that improved facilities can provide through hosting of tournaments and events. (5)
- » The findings reflect what was already known from previous surveys. (5)
- » Grant funding, sponsorships, volunteers need to be found to help allay the costs. (4)

- **Disagreed (Strongly or Somewhat)**

- » Sample of respondents does not reflect the entire population; sample size is small. (15 responses)
- » Taxes are high enough currently; cannot afford an increase in taxes. (11)
- » Those who participated in the survey skews towards those who want development. (5)
- » Make facility users pay and not tax payers. (4)
- » The facility costing examples are not realistic but are inflated for something beyond a basic facility. (2)
- » The current area is not fully utilized. (2)
- » Many people do not use the facilities so do not support improvements to them. (2)
- » More investment in outdoor facilities is needed. (2)
- » The development of a field house type facility would increase the type of services offered and would get used. (2)

- **Neither Agreed nor Disagreed**

- » Concerns expressed about the survey method including a small sample size and potential for people to skew findings. (6 responses)

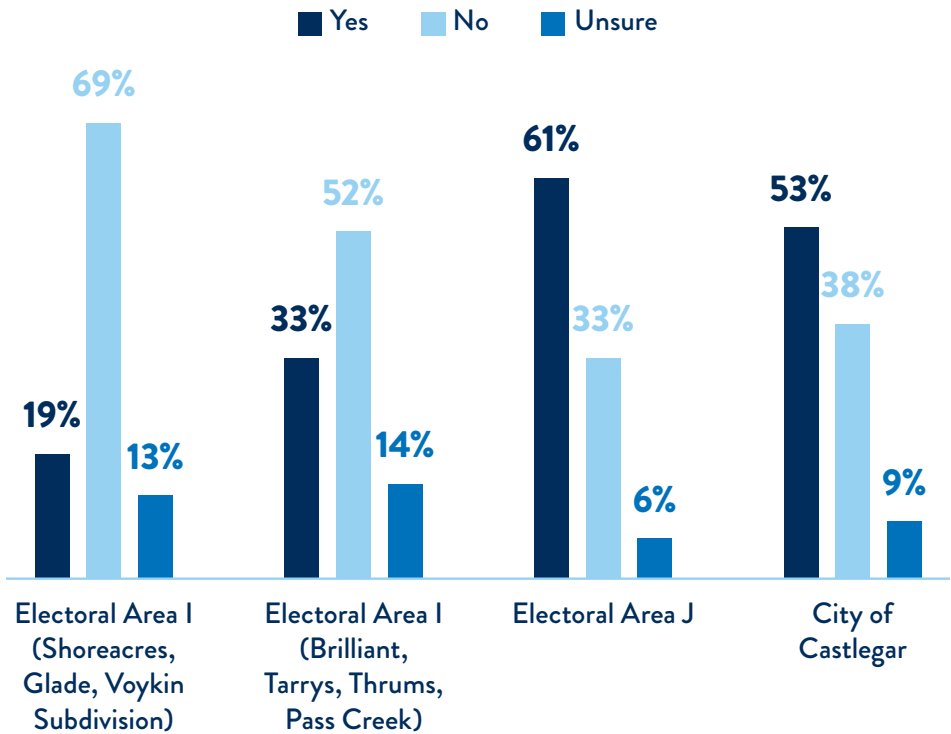
3.3 A SECONDARY INDOOR ICE SHEET

In the Phase 2 survey findings, the majority of respondents from Area J and the City of Castlegar stated they would be willing to increase their annual taxation by at least \$150 to fund borrowing for enhancements or new amenities. For Area I respondents, just under half (49%) said they would support an annual tax increase of \$100.

A secondary ice sheet was found to be the highest priority for respondents from Area I and J and the City of Castlegar. The estimated cost for a secondary ice sheet is 33 million. This would increase taxation by \$200-\$250.

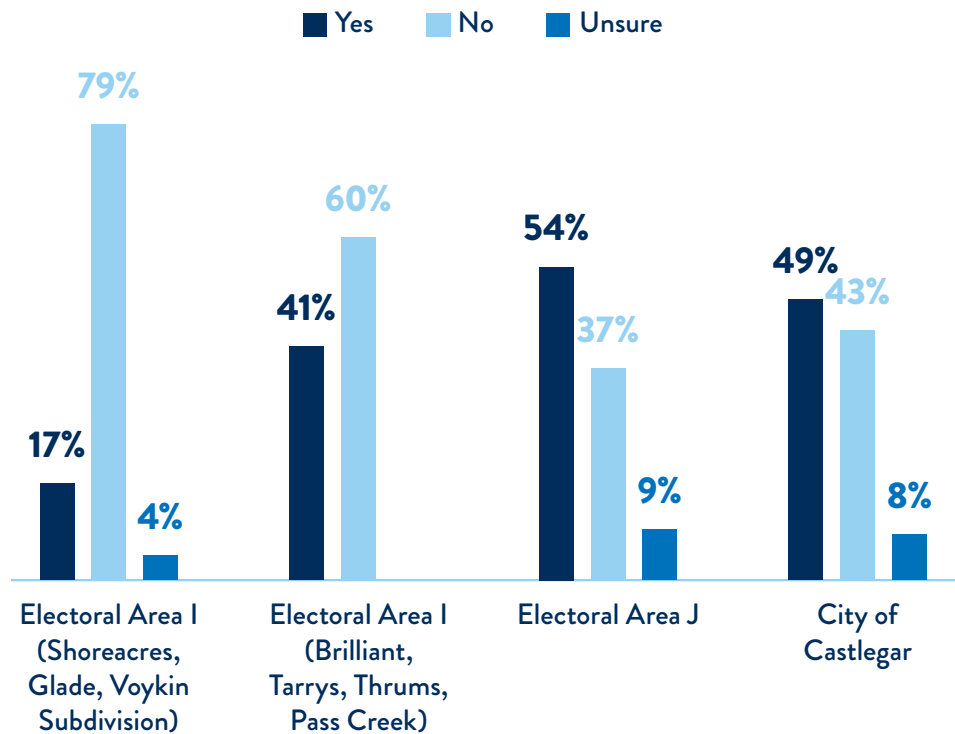
When asked if they believe that a secondary indoor ice sheet is the highest priority for their communities, approximately two-thirds (69%) of respondents from Electoral Area I (Shoreacres, Glade, Voykin Subdivision) said “no” they did not believe that. Approximately half (52%) of respondents from Electoral Area I (Brilliant, Tarry’s, Thrums, Pass Creek) also did not believe that a secondary indoor ice sheet is the highest priority for their community. Conversely, over half of respondents from Electoral Area J (61%) and Castlegar (53%) said they believe the secondary indoor ice sheet is a priority for their community. Refer to the graph.

GRAPH 4: Do You Believe a Secondary Indoor Ice Sheet is the Highest Priority for Your Community



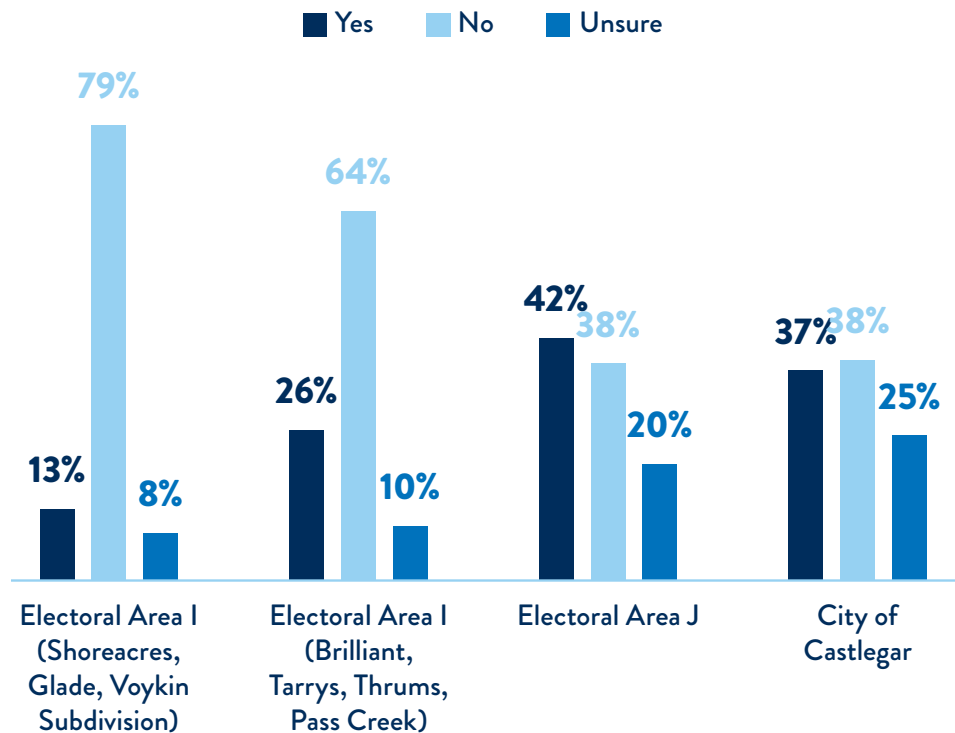
As illustrated in the graph, approximately three-quarters (79%) of respondents from Electoral Area I (Shoreacres, Glade, Voykin Subdivision) oppose an increase in taxation by \$200-\$250 to support the development of a secondary indoor ice sheet as do 60% of respondents from Electoral Area I (Brilliant, Tarrys, Thrums, Pass Creek). Just over half (54%) of respondents from Electoral Area J said they would support an increase of \$200-250 to support the development of a secondary indoor ice sheet. Just less than half (49%) said they would support the taxation increase for the development of a secondary indoor ice sheet.

GRAPH 5: Do You Support an Increase in Taxation by \$200-250 to Support the Development of a Secondary Indoor Ice Sheet?



Finally, when asked if they think that their communities would support an increase in taxation by \$200-\$250 for a secondary ice sheet, respondents indicated that their communities would be less in support for this level of taxation increase than they would be (as illustrated in Graph 5). As well, the proportion of respondents who said they are unsure rose when asked how their communities would react. In Electoral Area J and Castlegar the proportion of respondents who believe their communities would support the taxation increase is similar to the proportion who would not support the increase. Refer to the graph for additional information.

GRAPH 6: Do You Believe Your Community Would Support an Increase in Taxation by \$200-250 for a Secondary Ice Sheet?



APPENDICES



APPENDIX A – COMMUNITY MEETING PRESENTATION MATERIAL



REIMAGINING RECREATION SERVICES IN THE CASTLEGAR & DISTRICT AREA

COMMUNITY ENGAGEMENT FINDINGS

WELCOME

Please review the panels and share your reaction at the end. You can provide your comments online at engage.rdck.ca or by using the hard copy feedback form.

PROJECT PURPOSE

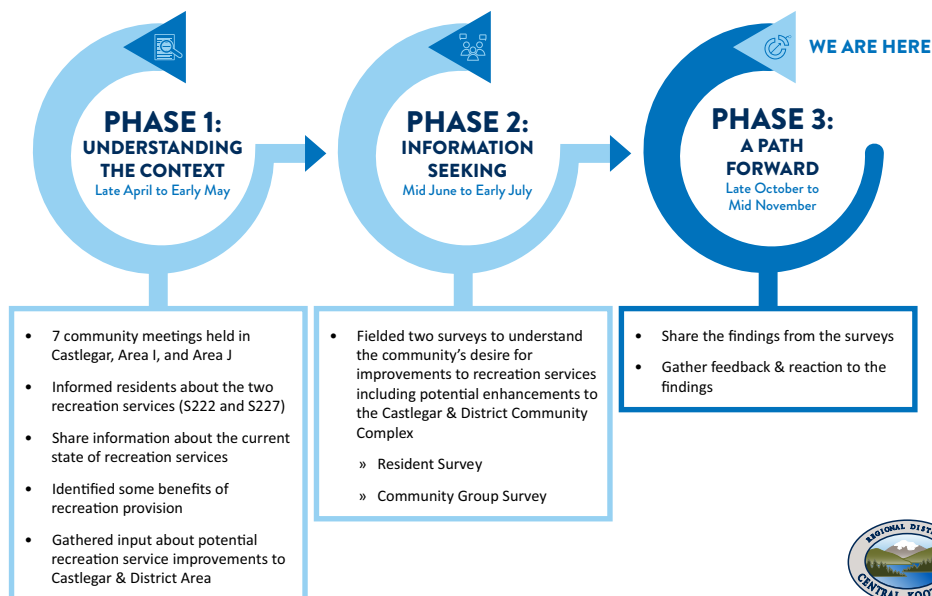
The Castlegar & District Recreation Commission sought the public's input about:

- current recreation services offered and potential enhancements to those services in in Castlegar and Areas I and J.
- any potential enhancements to the Castlegar & District Recreation Complex to further its position as a vibrant community hub.

RECREATION COMMISSION

- Maria McFaddin
- Brian Bogle
- Sue Heaton-Sherstobitoff
- Andy Davidoff
- Henny Hanegraaf

PROJECT PROCESS





REIMAGINING RECREATION SERVICES IN THE CASTLEGAR & DISTRICT AREA

RESIDENT SURVEY FINDINGS

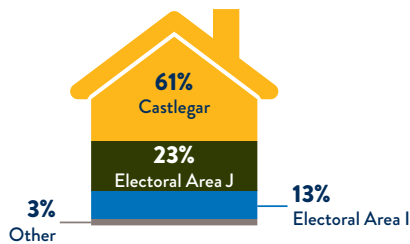
The major findings from the resident survey are presented in the following infographics according to where respondents live. For the comprehensive findings, please refer to the “*What We Heard Report: Technical Report*” at engage.rdck.ca.

SECTION A: ABOUT YOU

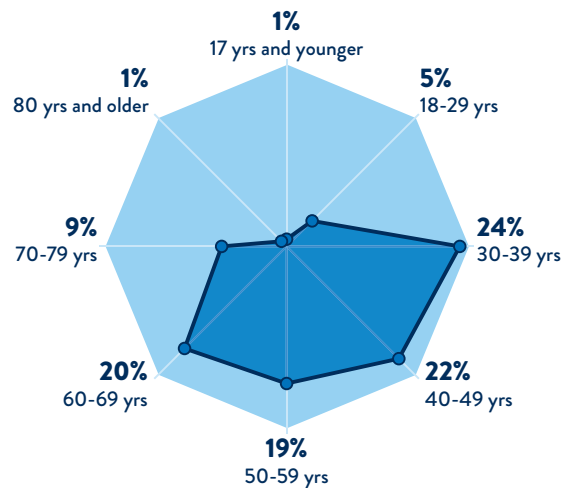


998
RESPONDENTS

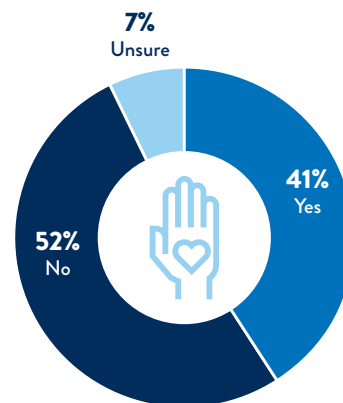
RESIDENCY



AGE



ACTIVE MEMBER / VOLUNTEER OF A RECREATION CLUB OR ORGANIZED GROUP



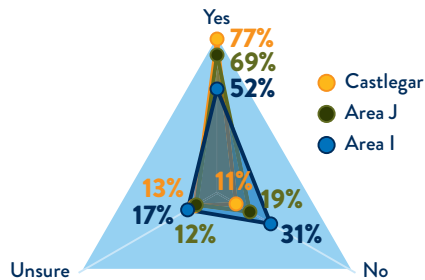


REIMAGINING RECREATION SERVICES IN THE CASTLEGAR & DISTRICT AREA

RESIDENT SURVEY FINDINGS

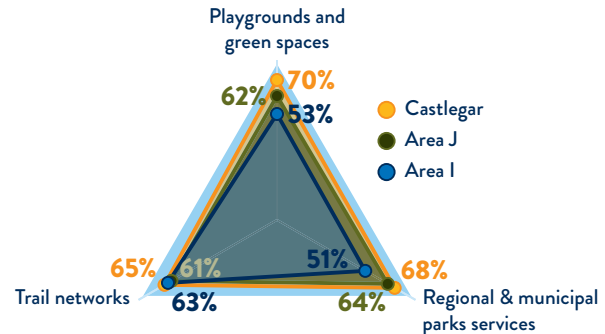
SECTION B: COMMUNITY FACILITIES, PARKS AND RECREATION

DO YOU THINK ENHANCEMENTS / IMPROVEMENTS
ARE NEEDED TO FACILITIES, PARKS AND
RECREATION IN THE CASTLEGAR & DISTRICT AREA?



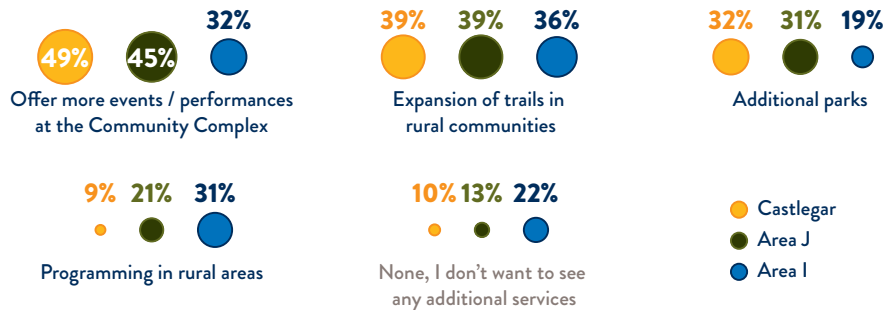
See Graph 1 in the What We Heard Report: Technical Report

WHAT RECREATION AMENITIES DO YOU MOST
VALUE THAT OCCUR WITHIN THE CASTLEGAR &
DISTRICT AREA?



See Graph 3 in the What We Heard Report: Technical Report

WHICH RECREATION SERVICES WOULD YOU LIKE TO SEE
DELIVERED IN THE CASTLEGAR & DISTRICT AREA?



See Graph 4 in the What We Heard Report: Technical Report



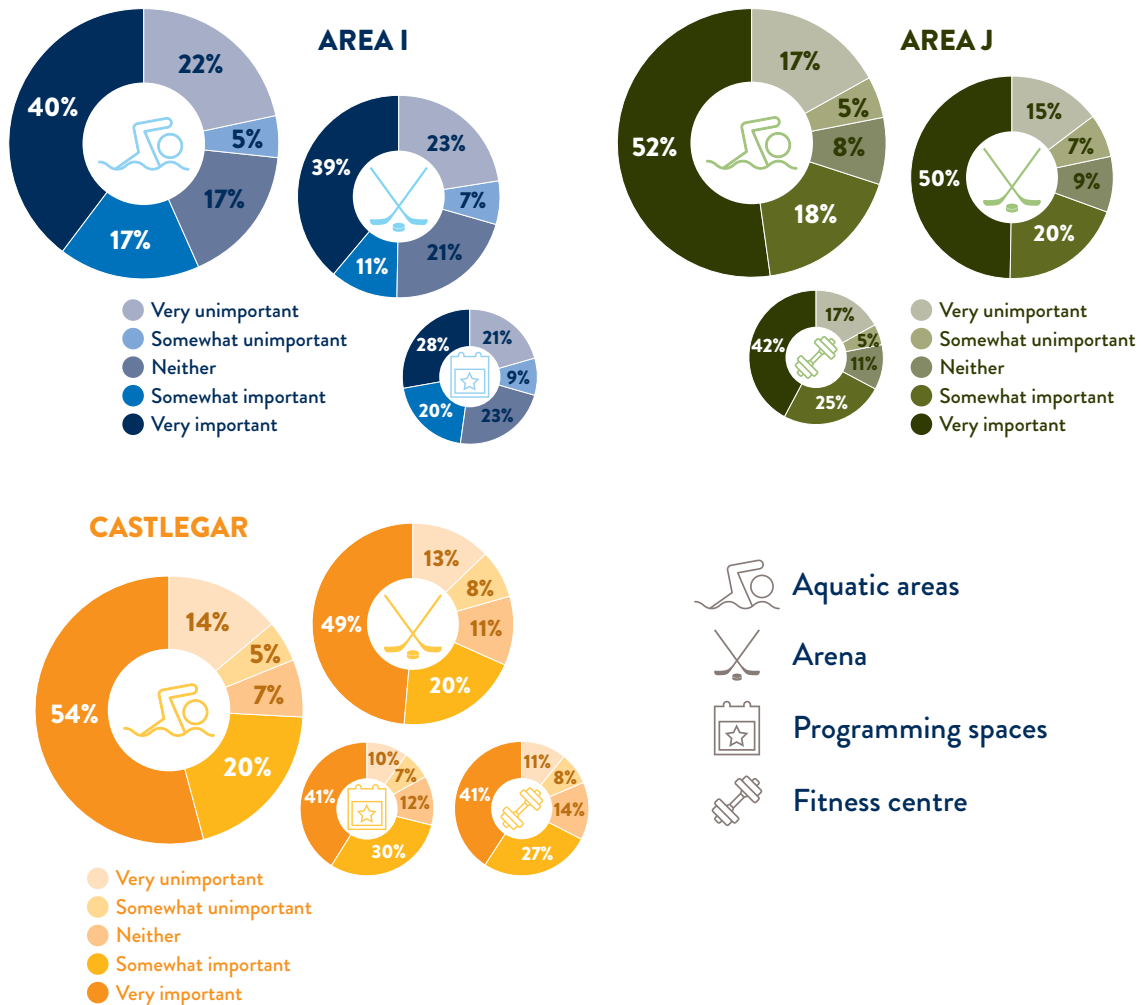


REIMAGINING RECREATION SERVICES IN THE CASTLEGAR & DISTRICT AREA

RESIDENT SURVEY FINDINGS

SECTION C: CASTLEGAR & DISTRICT COMMUNITY COMPLEX

HOW IMPORTANT TO YOU IS EACH AMENITY OFFERED AT THE
CASTLEGAR & DISTRICT COMMUNITY COMPLEX?



See Graph 6 in the What We Heard Report: Technical Report



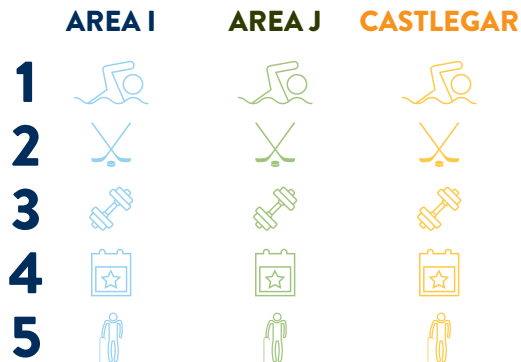


REIMAGINING RECREATION SERVICES IN THE CASTLEGAR & DISTRICT AREA

RESIDENT SURVEY FINDINGS

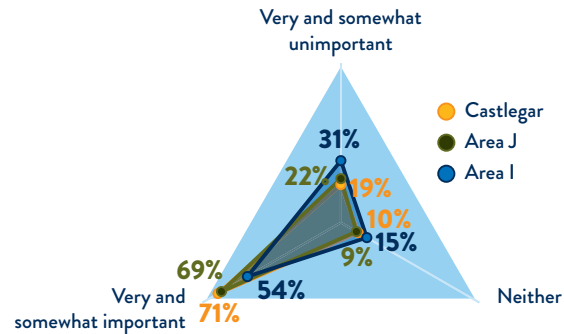
SECTION C: CASTLEGAR & DISTRICT COMMUNITY COMPLEX

RANKING OF PRIORITY OF IMPORTANCE OF THE
CASTLEGAR & DISTRICT COMMUNITY COMPLEX
AMENITIES



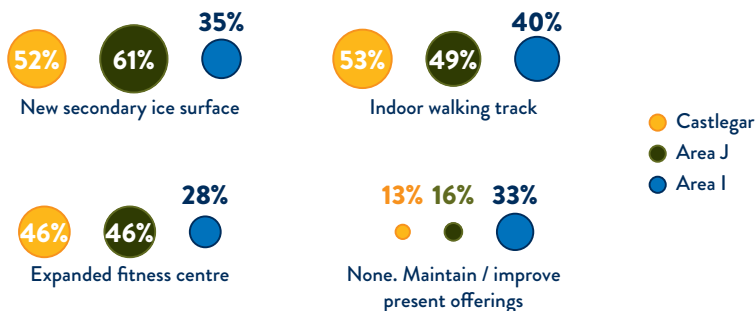
See Graph 8 in the What We Heard Report: Technical Report

HOW IMPORTANT IS IT THAT RECREATION
PROGRAMMING IS DELIVERED AT THE CASTLEGAR
& DISTRICT COMMUNITY COMPLEX?



See Graph 9 in the What We Heard Report: Technical Report

WHAT AMENITIES WOULD YOU LIKE TO SEE ADDED
AT THE COMMUNITY COMPLEX?



See Graph 12 in the What We Heard Report: Technical Report





REIMAGINING RECREATION SERVICES IN THE CASTLEGAR & DISTRICT AREA

RESIDENT SURVEY FINDINGS

SECTION D: UNDERSTANDING THE COSTS

Prior to the questions being posed, respondents were provided with some information related to taxation. This first table (below) showed the current level of taxation for recreation at the Community Complex and for parks services.

CURRENT ANNUAL TAXATION FOR PRESENT RECREATION AT THE CASTLEGAR & DISTRICT COMMUNITY COMPLEX AND PARKS SERVICES

Present Recreation Services	2024 Taxation (per year) for residents with a property assessed at \$500,000 who live in:	
	<ul style="list-style-type: none"> Shoreacres Glade Voykin Subdivision Playmor Junction 	<ul style="list-style-type: none"> City of Castlegar Ootischenia Robson Thrums Tarrys Pass Creek Brilliant Arrow Lakes region
Regional Parks - Waterloo Eddy, Brilliant Bridge, Pass Creek Regional Park and Exhibition Grounds, Robson Boat Ramp, Glade Municipal Parks - Funding to the City of Castlegar for Millennium Park (playing fields), Kinnaird Playing Fields (ball diamonds), Recreation Complex Fields (ball diamonds and playing fields) Castlegar & District Community Complex - Arena, Meeting and Banquet Rooms, Seniors Centre Space, Day Care, Skateboard Park, and public spaces.	\$335.46	\$335.46
Aquatic and Fitness Centre	\$0* (do not pay for these services)	\$137.31
Total (Annual) For RDCK funded Recreation, Facility and Park Services	\$335.46	\$472.77

The second table (below) presented potential taxation related to borrowing for new amenities or recreation services (for a 25 year borrowing period).

POTENTIAL ANNUAL TAXATION TO BORROW FOR 25 YEARS FOR NEW AMENITIES OR RECREATION SERVICES IN THE CASTLEGAR & DISTRICT AREA

The following numbers represent the potential range that each new amenity would cost residents annually.

Potential New Amenity or Recreation Service	Increase in Taxation (per year) for Residents with a property assessed at \$500,000 who live in:	
	<ul style="list-style-type: none"> Shoreacres Glade Voykin Subdivision Playmor Junction 	<ul style="list-style-type: none"> City of Castlegar Ootischenia Robson Thrums Tarrys Pass Creek Brilliant Arrow Lakes region
New Secondary Indoor Ice Surface	\$200 to \$250	\$200 to \$250
New Secondary Outdoor Ice Surface	\$100 to \$150	\$100 to \$150
Field House	\$200 to \$250	\$200 to \$250
Covered Outdoor Hard Court	\$25 to \$50	\$25 to \$50
Gymnasium	\$75 to \$125	\$75 to \$125
Multipurpose Space - Youth	\$50 to \$75	\$50 to \$75
Outdoor Pickle Ball – Tennis Courts	\$10 to \$15	\$10 to \$15
Indoor Squash / Racquetball Courts	\$75 to \$125	\$75 to \$125
Enhance current Complex including adding walking track	\$50 to \$75	\$50 to \$75
Expanded Skatepark	\$10 to \$15	\$10 to \$15
New Leisure Pool	\$215 to \$265*	\$75 to \$125
Fitness Centre Expansion (Weight Room)	\$190 to \$240*	\$50 to \$75

*If this area were to be included in the provision of a new leisure pool or fitness centre expansion, there will be an additional increase in the cost to fund aquatics and fitness because these households are not funding these two areas currently.



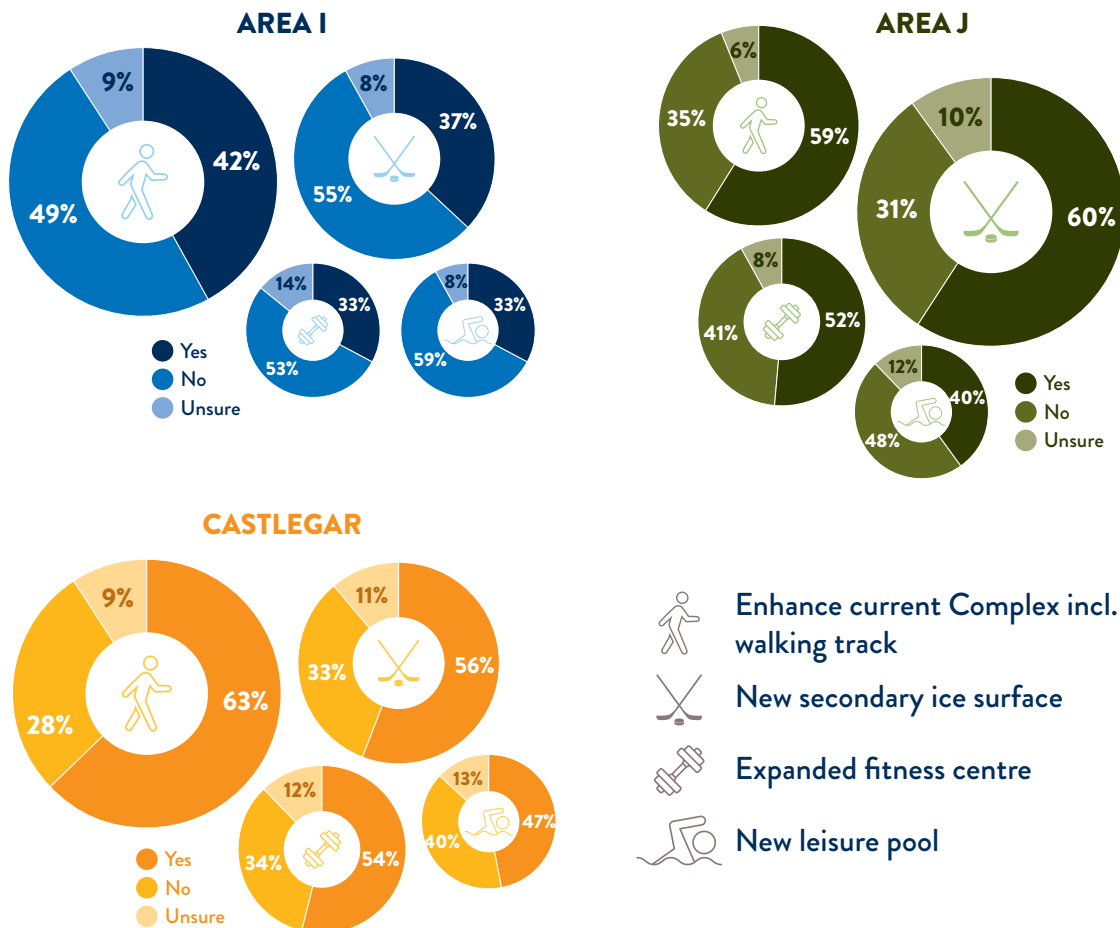


REIMAGINING RECREATION SERVICES IN THE CASTLEGAR & DISTRICT AREA

RESIDENT SURVEY FINDINGS

SECTION D: UNDERSTANDING THE COSTS

CONSIDER THE POTENTIAL RESIDENTIAL TAX INCREASE, WHAT
ENHANCEMENTS WOULD YOU SUPPORT?



See Graph 13 in the What We Heard Report: Technical Report





REIMAGINING RECREATION SERVICES IN THE CASTLEGAR & DISTRICT AREA

RESIDENT SURVEY FINDINGS

SECTION D: UNDERSTANDING THE COSTS

RANKING OF PRIORITY OF IMPORTANCE FOR POTENTIAL ENHANCEMENTS



See Graph 14 in the What We Heard Report: Technical Report



HOW MUCH WOULD YOU SUPPORT PAYING ANNUALLY TO FUND BORROWING FOR ENHANCEMENTS OR NEW AMENITIES?



See Graph 15 in the What We Heard Report: Technical Report





REIMAGINING RECREATION SERVICES IN THE CASTLEGAR & DISTRICT AREA

COMMUNITY GROUP SURVEY FINDINGS

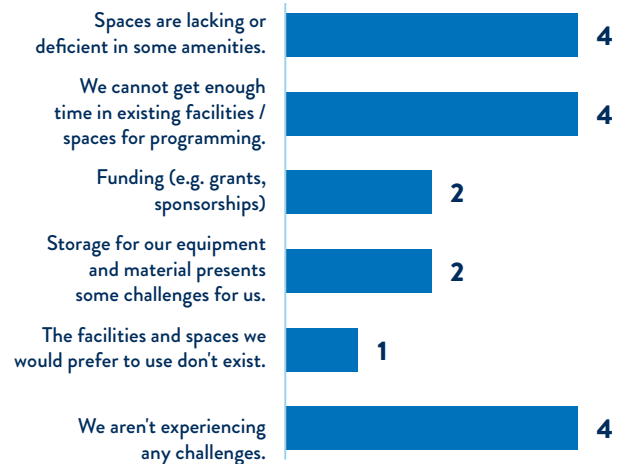
The major findings from the community group survey are presented in the following infographics. For the comprehensive findings, please refer to the “What We Heard Report: Technical Report” on the RDCK’s website (engage.rdck.ca).

SECTION A: ABOUT YOUR GROUP / ORGANIZATION

1. Air Cadets Castlegar 581 Squadron
2. The Association of West Kootenay Rock Climbers (TAWKROC)
3. West Kootenay Football Club
4. Kootenay Swim Club
5. Max Ice Hockey
6. Castlegar Community Response Network Increasing Recreation Involving Seniors (IRIS) Program & Castlegar Community Services Better at Home program
7. Castlegar Minor Hockey
8. Castlegar Girls Softball Association
9. Kootenay Gem, Mineral & Fossil Show Committee
10. Castlegar Aquanauts

SECTION B: CURRENT OPERATION & CHALLENGES

WHAT CHALLENGES ARE YOU EXPERIENCING AS YOU DELIVER PROGRAMS AND SERVICES?



See Graph 22 in the What We Heard Report: Technical Report



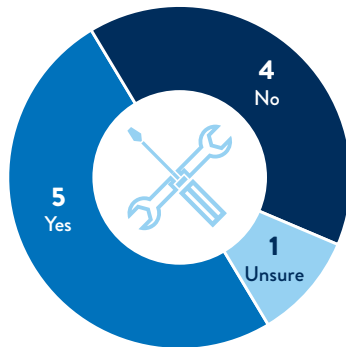


REIMAGINING RECREATION SERVICES IN THE CASTLEGAR & DISTRICT AREA

COMMUNITY GROUP SURVEY FINDINGS

SECTION C: AMENITY / FACILITY ENHANCEMENTS & ADDITIONS

IS THERE A NEED IN THE CASTLEGAR & DISTRICT AREA FOR IMPROVEMENTS TO EXISTING AMENITIES OR RECREATION SERVICES? (NOT THE COMMUNITY COMPLEX)



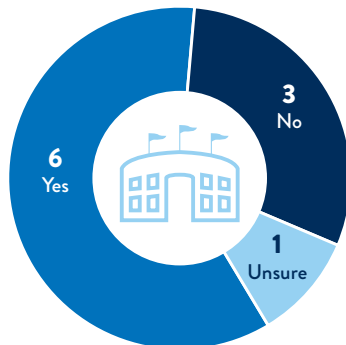
See Graph 23 in the What We Heard Report: Technical Report

TOP PRIORITIES FOR IMPROVEMENTS TO THE CASTLEGAR & DISTRICT COMMUNITY COMPLEX (7 RESPONDENTS)

- 1 New secondary indoor ice surface
- 2 New leisure pool
- 3 Field house
- 4 Fitness centre expansion (weight room)
- 5 Indoor walking track

See Graph 26 in the What We Heard Report: Technical Report

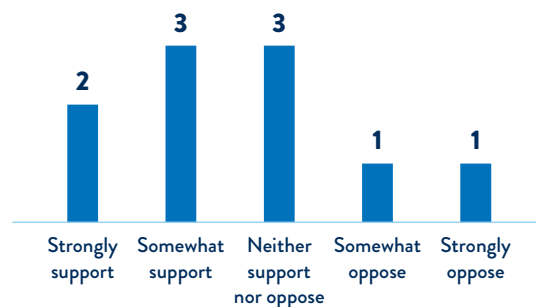
IS THERE A NEED FOR IMPROVEMENTS TO THE COMMUNITY COMPLEX?



See Graph 24 in the What We Heard Report: Technical Report

SECTION D: PARTNERSHIPS AND COST

TO WHAT EXTENT WOULD YOU SUPPORT AN INCREASE IN USER FEES TO ENSURE FACILITY IMPROVEMENTS OCCUR?



See Graph 27 in the What We Heard Report: Technical Report





REIMAGINING RECREATION SERVICES IN THE CASTLEGAR & DISTRICT AREA

PHASE 3: A PATH FORWARD

WHAT DO YOU THINK?



Now that you have reviewed these survey findings from residents and group in Castlegar and Areas I and J, please take a moment and share your thoughts about them.

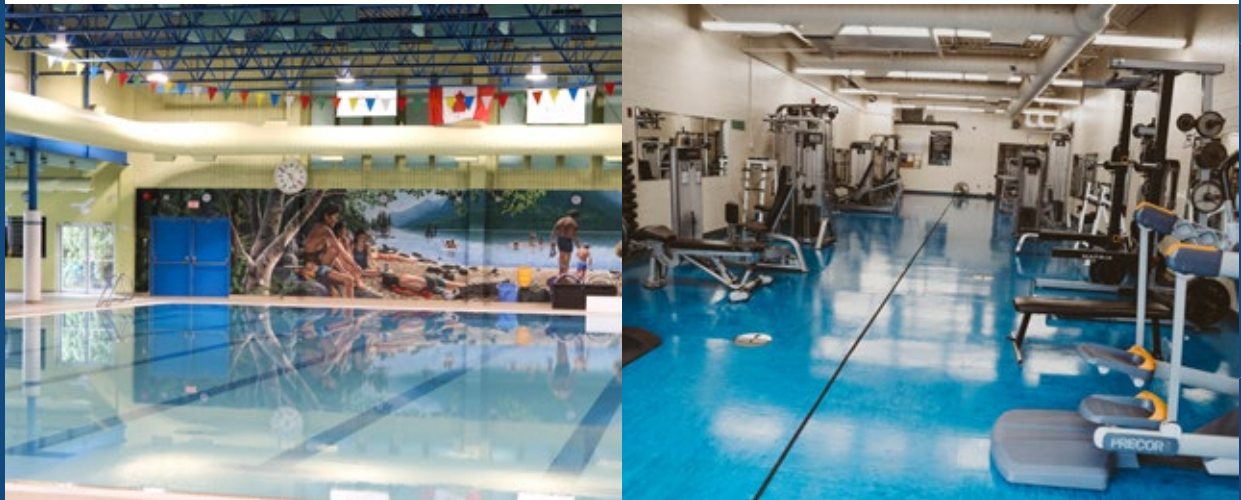
There are three ways you can provide your feedback:

1. Scan the QR Code to fill out a quick survey.
2. Visit engage.rdck.ca to complete the quick survey.
3. Complete a hard (paper) copy and leave it with one of the project team members before leaving the open house or drop it off at the Castlegar & District Community Complex.



Please submit your response by November 18, 2024 and limit your feedback to a single submission.

Thank you for your interest and time. The feedback you provide will be considered by the Castlegar & District Recreation Commission as it plans for future recreation provisions in Castlegar and Areas I and J.



APPENDIX B – FEEDBACK FORM



REIMAGINING RECREATION SERVICES CASTLEGAR & DISTRICT AREA

WHAT DO YOU THINK?

PHASE 3: A PATH FORWARD - RESIDENT FEEDBACK QUESTIONNAIRE

After reviewing the survey findings from residents and groups in Castlegar and Areas I and J, please take a moment and share your thoughts about those findings. You can find the survey findings online at engage.rdck.ca – the material presented at the open houses is online as is the comprehensive *What We Heard* report.

HOW LONG WILL IT TAKE TO COMPLETE THE SURVEY?

It should take you approximately 5-10 minutes to respond.

HOW MANY TIMES CAN I COMPLETE THE SURVEY?

Please only participate in the survey once.

WHEN DOES MY RESPONSE NEED TO BE SUBMITTED?

Please submit your response by **November 18, 2024**.

WHO DO I CONTACT IF I HAVE FURTHER QUESTIONS ABOUT THE ENGAGEMENT PROCESS?

For further information or questions regarding this survey, please contact us at communications@rdck.bc.ca.

INFORMED CONSENT & PRIVACY STATEMENT

Your participation in this survey is completely voluntary. You may choose not to participate or end your participation at any time.

The information you provide through this survey is collected under the authority of, and managed in accordance with, the Freedom of Information and Protection of Privacy Act. The information you provide will be used by the Regional District of Central Kootenay (RDCK) to inform planning related to potential enhancements to recreation services in Areas I & J and the City of Castlegar. Survey data will be stored electronically on the contractor's secure server and deleted one year after the completion of the project.

Your responses will be combined with all other responses received. For analysis purposes, the responses will be examined by the description of respondents including residency. Input received will be aggregated and summarized anonymously in all reporting. At no time will any specific comments be attributed to a specific survey respondent.

Any personal information you provide will not be disclosed for any other purpose than stated without your specific written consent or unless required by law to do so.

1. Where do you live?

- ☐ Electoral Area I (Shoreacres, Glade, Voykin Subdivision) ☐ City of Castlegar
☐ Electoral Area I (Brilliant, Tarrys, Thrums, Pass Creek) ☐ Other (please specify): _____
☐ Electoral Area J

2. Are you an active member or volunteer of a recreation club or organized group?

- ☐ Yes ☐ No ☐ Unsure

a. If "Yes", what is the club or group?

3. To what extent do you agree that the survey findings reflect your community (the one in which you live)?

- ☐ Strongly agree ☐ Somewhat disagree
☐ Somewhat agree ☐ Strongly disagree
☐ Neither

a. Please explain your answer.

In the survey findings, the majority of respondents from Area J and the City of Castlegar stated they would be willing to increase their annual taxation by at least \$150 to fund borrowing for enhancements or new amenities. For Area I respondents, just under half (49%) said they would support an annual tax increase of \$100.

A secondary ice sheet was found to be the highest priority for respondents from Area I and J and the City of Castlegar. The estimated cost for a secondary ice sheet is 33 million. This would increase taxation by \$200-\$250.

4. Do you believe that a secondary indoor ice sheet is the highest priority for your community?

- ☐ Yes ☐ No ☐ Unsure

5. Do you support an increase in taxation by \$200-\$250 to support the development of a secondary indoor ice sheet?

- ☐ Yes ☐ No ☐ Unsure

6. Do you believe your community (the one in which you live) would support an increase in taxation by \$200-\$250 for a secondary ice sheet?

- ☐ Yes ☐ No ☐ Unsure

Thank you very much for taking the time to share your thoughts about the survey findings. It is important to us and will be used in the planning of recreation services by the Castlegar & District Recreation Commission.



